



January 2009

Thanks so much for considering EDG International, Inc. (EDGI). We sincerely appreciate your taking the time to review our capabilities.

EDGI is a company with a very proud history. Our roots go back to a family business established in the early 1960s. We started as an engineering subcontractor providing power and communication engineering for off-shore platforms being built in the North Sea.

Over the years our ownership has changed a couple of times, but the core organization has remained the same. We are very proud of the fact that many of our employees have been with us for over 20 years. Most of our clients are long-term as well. Repeat business has allowed us to focus our efforts on honing our products to meet the needs of our clients; many consider us a partner rather than a vendor or contractor.

Through the years we have always had a commitment to *finishing the job* and *doing it right*. This commitment remains as strong today as it was in 1960.

Today we are a family business again, not only in ownership, but in our ongoing commitment to treat our fellow employees and clients with respect and consideration.

I sincerely hope that you will consider EDGI for your future engineering, system integration and project needs.

Sincerely,

EDG International, Inc.

A handwritten signature in black ink, appearing to read "W. T. Stewart, Jr.", is written over a light blue horizontal line.

William Terry Stewart, Jr.
President

EDG International, Inc.
10820 East 45th Street, Suite 101
Tulsa, Oklahoma 74146-3808



Table of Contents

Section 1	Introduction
Section 2	EDGI Corporate Organizational Chart
Section 3	Engineering
Section 4	Systems Integration
Section 5	Project Support
Section 6	Client List
Section 7	Portfolio



Section 1 Introduction

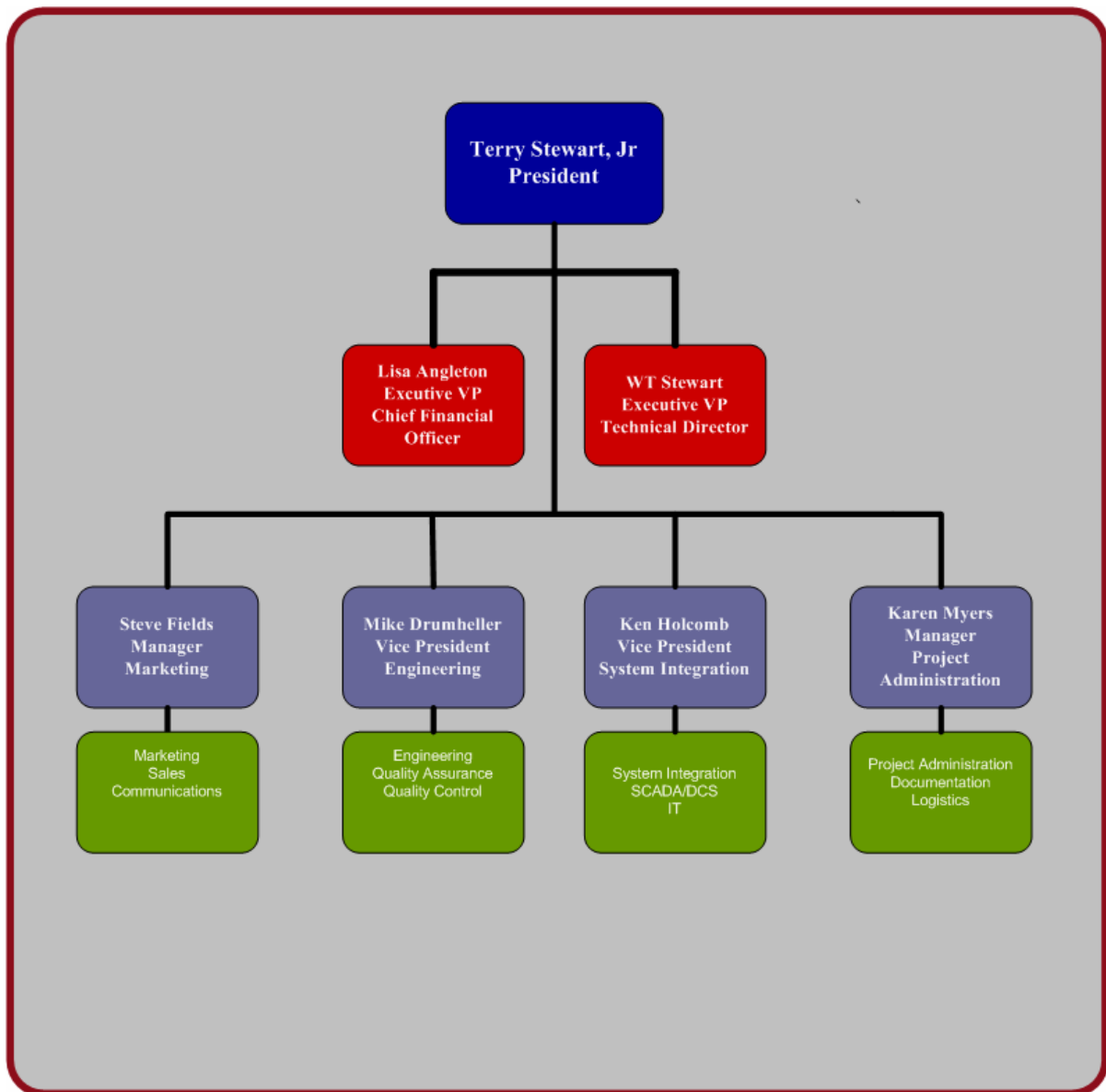
Headquartered in Tulsa, Oklahoma, we perform work both domestically and internationally.

The following pages provide a glimpse of EDG International, Inc. (EDGI). We are a multi-discipline engineering firm with a history that extends back to the early 1960's. EDGI continues to expand its role in the marketplace for engineering, system integration and project support and is committed to supporting the growing domestic and international need for power generation.

In addition to our core engineering and automation proficiencies, EDGI provides comprehensive project support service options to our customers. From feasibility studies and site selection to procurement, documentation, commissioning, and start-up, EDGI offers the accountability customers require.

Over the years, our commitment to every job has remained the same – perform safely, deliver quality at every level, finish on time and on budget.

Section 2 EDGI Corporate Organizational Chart



Section 3 Engineering

EDGI's heritage is rooted in the provision of engineering services to the petrochemical industry. Over the years our services have expanded to include Automation, Project Management, Field Support, QA/QC, and System Support.

EDGI engineers are qualified in the fields of Process, Electrical, Mechanical, Automation, and Instrumentation and Control.

EDGI's engineering philosophy is quite simple: *Ensure success by providing consistent support throughout the project.* We believe that all parties benefit when the same engineering team takes the project from start to finish:

- Conceptual Engineering
- Detailed Engineering
- Procurement Assistance
- Construction Support (if required)
- Check-out and Commissioning
- As-Built Support

EDGI Engineering is organized to perform two equally important functions:

- Perform conceptual and detailed technical design
- Provide technical information as a part of the project management team

We accomplish these two tasks by designating a Project Engineer for each job. The Project Engineer acts as liaison between the project team and the engineering team while also performing as an active member of project management. This dual role ensures a continuous information flow among all members of the project and engineering teams, thereby ensuring that problems are solved, technical questions are resolved, and technical misconceptions are promptly addressed.

EDGI's involvement in the power marketplace began in the early 1980's and continues to grow today. EDGI's early involvement centered on the following gas turbine generators:

- Solar Centars
- Ruston TA and TB Gas Turbines
- Allison 501s
- GE LM2500s
- GE LM5000s
- GE LM6000s

EDGI has gone on to support dozens of GE LM6000s in plants located throughout the world. Recent experience has expanded to include:

- Pratt & Whitney FT8 TWINPAC
- Pratt & Whitney FT8 SWIFTPAC
- GE Frame 7EAs & Rolls Royce Trent 60

Most recently, EDGI acted as engineer of record for the disassembly, transportation and reassembly of eight (8) GE Frame 7EAs for AEP-American Electric Power.

We offer the flexibility and experience to deliver fast-track project engineering and project management services to meet your power generation needs.

Section 4 Systems Integration (DCS Systems)

The basis for all of our services has always been engineering. EDGI has always provided an engineered solution for our client's needs upon which the appropriate control system solution could be built. This design capability ensured that the client truly has single-point responsibility for the control system, whether it is balance of plant (BOP) control for a GE LM6000, a petroleum automation system or a wind tunnel automation system.

Over three decades of engineering experience is a critical component in the state-of-art automation.

Our Systems Integration group assists in the development of the control philosophy and:

- Prepares the system architecture
- Establishes a detailed technical scope
- Purchases the hardware/software
- Develops the application software
- Develops the Human Machine Interface (HMI)
- Develops a test environment
- Assembles the system
- Develops the Factory Acceptance Test plan
- Develops system training documentation
- Commissions the system
- Performs operational and system acceptance testing
- Conducts operations and maintenance training

In addition to the power generation, EDGI has provided control systems for the petroleum industry: From desert oil fields to arctic pipelines, from gathering stations to export terminals, from metering stations to tank farms, from consultancy to turn-key

systems, from packaged modules to multi oil field systems. Whatever the application, EDGI has a proven solution.

EDGI utilizes only Commercial Off-The-Shelf (COTS) hardware/software components in our automation packages. EDGI provides the client with application source code. All of this ensures that the client is able to obtain support from a variety of sources anytime in the life cycle of the system.

Section 5 Project Support

The ultimate profitability and operability of any EDGI project is, to a large extent, dependant on the thoroughness and over all quality of the project support program. EDGI's project team varies in departments from specialized engineers to documentation staff. Our support staff works closely with the engineers, project managers and the customer to ensure that all needed materials and equipment meet design specifications and quality requirements. EDGI is committed to quality team performance by each support staff or team member.

Our project support staff has numerous responsibilities some of which include:

- Preparation of project proposals
- Procurement of project equipment and materials
- Preparation of project manuals
- Conducting safety training sessions on site
- Preparation of construction bid packages
- Creation and modification of AutoCAD drawings
- Testing and retesting site equipment
- Performing Quality Assurance/Quality Control (QA/QC) inspections
- Communicating continuously with the customer

Once a plant is on-stream commissioned, and a project completed, the wisdom of the investment often rests as much with those who will operate and maintain it as with those who designed it. In many areas of the world technically aware personnel are difficult to obtain. In answer to this challenge, EDGI custom designs training programs for operation and maintenance personnel. Depending on the complexity of the installation, such programs may include written course material, classroom instruction, static and/or dynamic modeling and hands-on field work.

EDGI maintains a full-time staff devoted to producing accurate, comprehensive, user-friendly documentation for each of its projects. Documentation is geared toward its intended readers; graphics and photographs are included where appropriate to enhance the final product. Without our project support staff we wouldn't have our project team.



EDGI's support staff personnel are very compatible amongst each department. We work together to produce the most safe, profitable and operable project.

Section 6 Client List

EDGI has a domestic and international client list. It includes the following:

Abu Dhabi National Oil Co. (ADNOC)	Oil Tanking Houston
Abu Dhabi Petroleum Co. (ADPC) OG+E	Energy Services
AEP Pacific	Gas & Electric
Alyeska Pipeline Paragould,	Arkansas Electric
ARAMCO Phillips	Petroleum
ARCO Oil Public	Service of Oklahoma
BP AMOCO Ruston/Petro	Peru
Chevron Petroleum Shell	Oil Co.
Chevron USA	Southwest Power
Cornerstone Energy SPAWAR	
DESC/NAVPET Tucson	Electric Power
Dubai Petroleum Tulsa	Public Schools
El Paso Natural Gas	Unocal Oil & Gas
ESSO Australia U.S.	Air Force Petroleum
ESSO Libya U.S.	Army Petroleum
General Electric U.S.	Dept of Energy
FERN Engineering Warren	Petroleum
Guam Power Williams	Communication
City of Houston Electric	Williams Energy
Koch Oil Williams	Pipeline
Mobil Oil Zakum	Development Co.(ZADCO)
NASA	

EDG International, Inc.

EDG International has over 40 years experience in the power generation business and the global capability to deliver fast track power-project engineering, construction and project support services.

Project Profiles: Power Systems

Project: Harry D. Mattison Power Plant

Client: WGPS/AEP

Timeline: 2007-2008

Location: Tonitown, Arkansas, U.S.

Output: 346 KW

Package: (4) GE Frame 7EAs

Scope of Work: Conceptual and detailed engineering,
Distributive Control System



Project: Southwestern Power Station Units 4 & 5

Client: WGPS/AEP

Timeline: 2007-2008

Location: Anadarko, Oklahoma, U.S.

Output: 173 KW

Package: (2) GE Frame 7EAs

Scope of Work: Conceptual and detailed engineering,
Distributive Control System



Project: Riverside Power Station Units 3 & 4

Client: WGPS/AEP

Timeline: 2007-2008

Location: Tulsa, Oklahoma, U.S.

Output: 173 KW

Package: (2) GE Frame 7EAs

Scope of Work: Conceptual and detailed engineering,
Distributive Control System



EDG International, Inc.
10820 E. 45th St., Ste. 101
Tulsa, OK 74146-3808
Office: 918.576.6900
FAX: 918.576.6974
info@edginternational.net



EDG International, Inc.

EDG International has over 40 years experience in the power generation business and the global capability to deliver fast track power-project engineering, systems management and project support services.

Project Profiles: Power Systems

Project: Pribbenow Mine Power Project
Client: Drummond Ltd./ WGPS
Timeline: 2003-2005
Location: La Loma Cesar, Columbia, S.A.
Output: 160 MW with substation
Package: (3) GE LM6000 PC's, (1) GE LM2500 with substation
Scope of Work: Conceptual and detailed engineering, Distributive Control System



Project: Fumesanto Power Project
Client: Duro Felguera S.A. Energia/ WGPS
Timeline: 2004
Location: Fumesanto, Italy
Output: 84 MW
Package: GE LM6000 PC's with substation
Scope of Work: Conceptual and detailed engineering, Distributive Control System



Project: OMPA Ponca City Unit 4
Client: Oklahoma Municipal Power Authority/ WGPS
Timeline: 2003
Location: Ponca City, Oklahoma, U.S.
Output: 46 MW
Package: GE LM6000 PC's with substation
Scope of Work: Conceptual and detailed engineering, Distributive Control System



EDG International, Inc.
10820 E. 45th St., Ste. 101
Tulsa, OK 74146-3808
Office: 918.576.6900
FAX: 918.576.6974
info@edginternational.net



www.edginternational.net

EDG International, Inc.

EDG International has over 40 years experience in the power generation business and the global capability to deliver fast track power-project engineering, construction and balance of plant services.

Project Profiles: Power Systems

Project: SOWEGA Power Project: Phases 1,2,3
Client: Cornerstone and Coral Energy
Grady County/Three Notch REC
Timeline: 2001,2002
Location: Baconton, Georgia, U.S.
Output: 264 MW with substation
Package: (6) GE LM6000 PC's with substation
Scope of Work: Conceptual and detailed engineering, Distributive Control System



Project: Gardabani Power Project
Client: Republic of Georgia
Timeline: 2005-2006
Location: Gardibani, Republic of Georgia
Output: 96 MW with substation
Package: (2) each Pratt & Whitney FT 8 TWINPAC
Scope of Work: Conceptual and detailed engineering, Distributive Control System



Project: Buhasa and Murban GOSP Stroke Pipeline and Pump Station
Client: Abu Dhabi National Petroleum Company
Timeline: 1978-1982
Location: Persian Gulf
Output: 26 MW each with substation.
Package: (3) GEC 20 EASI-2's
Scope of Work: Conceptual and detailed engineering, Distributive Control System

No
Photo
Available

EDG International, Inc.
10820 E. 45th St., Ste. 101
Tulsa, OK 74146-3808
Office: 918.576.6900
FAX: 918.576.6974
info@edginternational.net



EDG International, Inc.

EDGI's AFHS system delivers accurate, minimal maintenance gauging solutions with automatic correction should any failure of a sensor occur.

Tank Gauging and Fuel Handling Systems

EDGI has extensive tank gauging and fuel handling system experience, providing conceptual design, feasibility studies, preliminary design, detailed design, project management and construction supervision.

EDGI's Automatic Fuel Handling Software (AFHS) is a flexible SCADA package which automates and controls tank farms and bulk fuel handling depots to monitor fuel inventory and provide leak detection.

The EDGI AFHS package provides automatic control and sequencing of valves, pumps and motors.



EDG International, Inc.
10820 E. 45th St., Ste. 101
Tulsa, OK 74146-3808
Office: 918.576.6900
FAX: 918.576.6974
info@edginternational.net



www.edginternational.net

EDG International, Inc.

EDGI's has global offshore experience and expertise in power generation, control systems, instrumentation, fire and gas and communication systems.

Project Profiles: Offshore

Explorer, Alyeska, Trans-Nigeria: EDGI helped deliver key benefits for pipeline owners by designing and implementing automated inventory control and loss control through leak detection. Additionally, we helped improve the clients cash flow via automated billing. EDGI's experience not only relates to the control systems but to other major pipeline features such as the pumping stations.

Upper Zakum Field: Our personnel engineered one of the largest offshore platform control systems in the world. We performed the conceptual design, detailed engineering, vendor evaluation, procurement, construction management, commissioning and training for the control systems as well as all wellhead instrumentation and power generation for over 70 production platforms. (4) Gathering and GOSP platforms.

NW Java Sea, Indonesia: Our personnel provided all of the design and construction of the gas compressor module for Zulu Junction #1 platform. It consisted of 2 Demag/DeLaval centrifugal gas compressors, each driven by an individual gas turbine, together with controls, vessels, coolers, heaters and pipe work. Scope included complete process engineering design, mechanical design, piping design, electrical design and instrumentation design.

Lake Maracaibo, Venezuela: EDGI supplied the design philosophies and detailed engineering of the structural, electrical, instrumentation, fire/gas detection, and SCADA systems for the Lagoven West Urdancta Gas Compression Plant for Dresser Industries, Energy Systems Division.



EDG International, Inc.
10820 E. 45th St., Ste. 101
Tulsa, OK 74146-3808
Office: 918.576.6900
FAX: 918.576.6974
info@edginternational.net



www.edginternational.net

EDG International, Inc.

EDG International has over 40 years experience in the power generation business and the global capability to deliver fast track power-project engineering, systems management and project support services.

Project Profiles: NASA

Project: Lewis Research Center SCADA System

Client: NASA

Timeline: 1985-1995

Location: Cleveland, Ohio, U.S.

Scope of Work: EDGI engineered and installed one SCADA and five DCS systems in the NASA Lewis Research Center. The \$14 Million Central Air System project controls 250,000 HP in compressors, exhausters, heaters and chillers supplying conditioned air to 150 test cells in the Engine Research Building and the Propulsion Systems Laboratory.

Another system controls the largest Supersonic Wind Tunnel (SWT) in the world. The compressor train features a 150,000 HP Main Drive and a 100,000 HP Secondary Drive motor and (2) two 18,000 HP Ejector Motors. Still another system controls an upgraded 15 MVA Variable Frequency Drive used to perform basic research in the study of turbo machinery mechanics.

Project: Ames-Dryden Edwards AFB

Client: NASA

Timeline: 1992-1997

Location: Mojave Desert, California, U.S.

Scope of Work: EDGI upgraded, installed enhancements to the DCS with closed loop speed controls.



EDG International, Inc.
10820 E. 45th St., Ste. 101
Tulsa, OK 74146-3808
Office: 918.576.6900
FAX: 918.576.6974
info@edginternational.net



www.edginternational.net